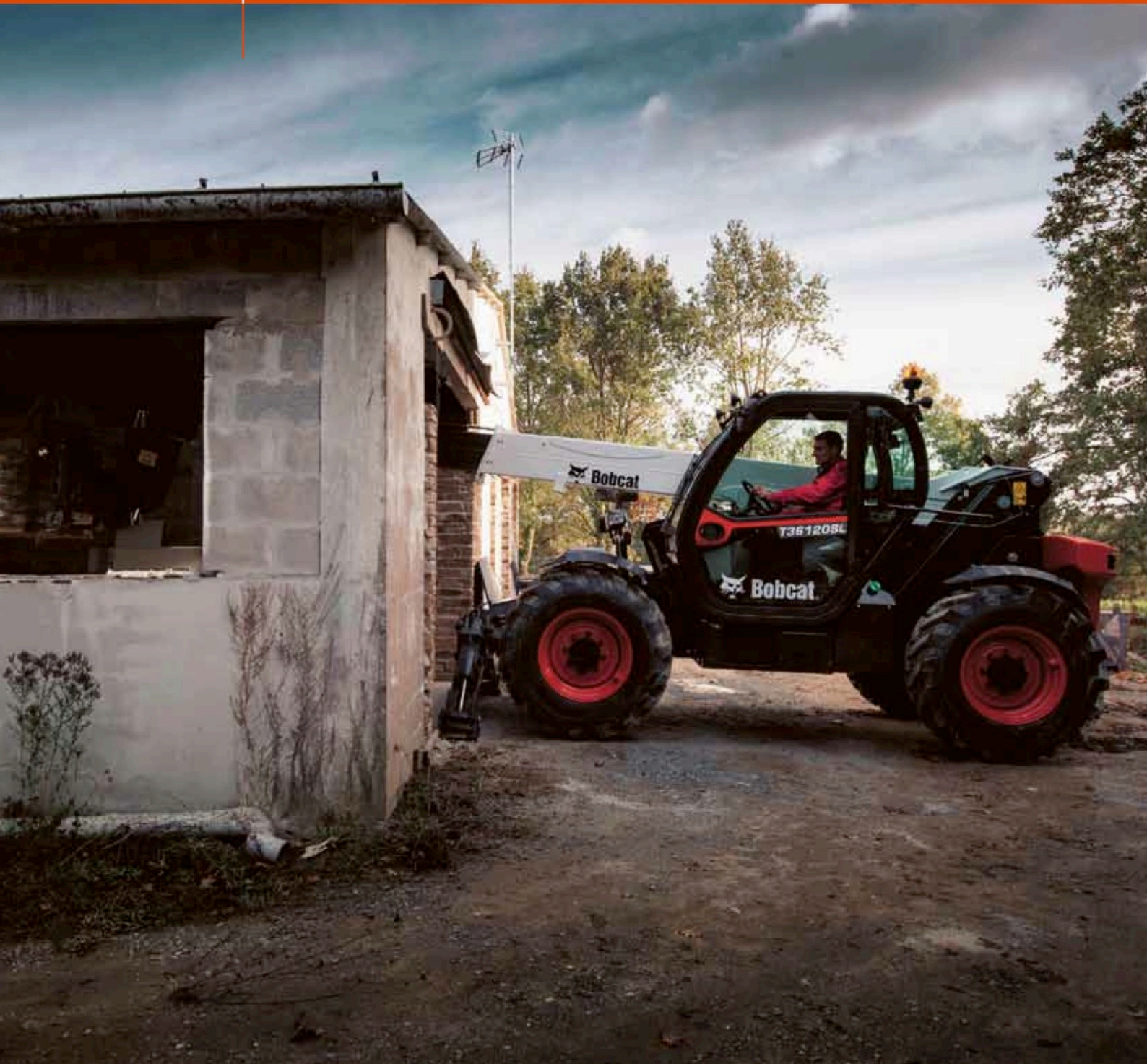




TELESCOPIC HANDLERS  
T36120SL STAGE IIIA



***One Tough Animal™***



# T36120SL STAGE IIIA – SPECIFICATIONS

## Performance

Lifting height	11524.0 mm
Lifting height — on stabilisers	11871.0 mm
Rated capacity	3600 kg
Capacity (at max. height)	2300 kg
Capacity (at max. height on stabilisers)	3200 kg
Capacity (at max. reach on stabilisers)	1200 kg
Capacity (at max. reach)	350 kg
Max. reach	8198.0 mm
Crowding force	7800 daN

## Weights

Weight (unladen)	8350 kg
------------------	---------

## Traction

Standard tyres	SOLIDEAL 405/70-20 16PR
Low speed (forward/reverse)	8.5 km/h
High speed (forward/reverse)	30.0 km/h

## Drive System

Main drive	Hydrostatic motor
Transmission	Hydrostatic with electronic regulation

## Engine

Make / Model	PERKINS / 1104D-44TA turbo
Fuel	Diesel
Cooling	Liquid
Rated power (DIN 6271) at 2200 RPM	74.5 kW
Maximum torque at 1400 RPM	410.0 Nm
Number of cylinders	4
Displacement	4.40 L

## Hydraulic System

Pump type	Gear pump with LS valve
-----------	-------------------------

## Cycle Times

Lift time - no load	9.8 s
Lower time - no load	6.0 s
Telescope in time at max. reach - no load	7.9 s
Telescope in time at max. height - no load	7.9 s
Telescope out time at max. reach - no load	12.2 s
Telescope out time at max. height - no load	12.2 s

## Brakes

Engine braking	Hydrostatic
Parking and emergency brake	Negative brake with hydraulic command

## Fluid Capacities

Axles and reduction gears front / rear	8.1/8.1 L
Fuel tank	130.00 L
Hydraulic reservoir [HYDRAULIC]	71.00 L

## Standard Features

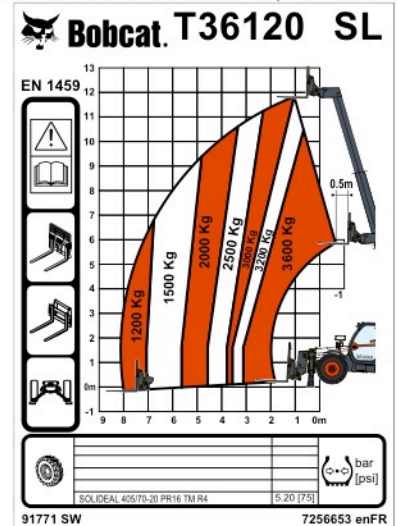
Aggravating Movements Arrester (AMA)	Right and left side mirrors
Hydrostatic transmission	Two way hydraulic supply at the end of the boom
ROPS/FOPS operator cab	Mudguards
Heating, demisting and ventilation	Turbo-charged engine
Front and rear washer/wipers	Mechanical lock of the equipment
Suspension seat	Standard 405/70x20 tyres
Road lights	Pallet Forks 1200mm length / Floating / 1,12m carriage /
Turn signals	Forks included / Backrest included / For Quicktack tool carrier

## Environmental

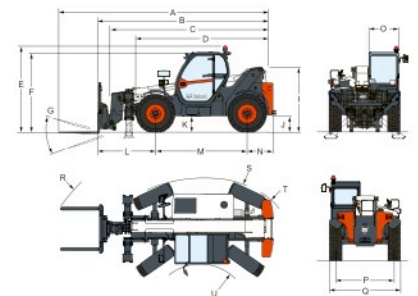
Sound pressure level (LpA)	76 dB(A)
Level of acoustic power (LWA)	106 dB(A)
Whole body vibration (ISO 2631-1)	0.90 ms <sup>-2</sup>

## Load Charts

With forks and standard 405/70x20 tyres, on stabilisers



## Dimensions



(-)	857.0 mm	(L)	1793.0 mm
(A)	6647.0 mm	(M)	2850.0 mm
(B)	5442.0 mm	(N)	799.0 mm
(C)	5287.0 mm	(O)	930.0 mm
(D)	4192.0 mm	(P)	1862.0 mm
(E)	2584.0 mm	(Q)	2264.0 mm
(F)	2389.0 mm	(R)	5341.0 mm
(G)	143°	(R)	5429.0 mm
(I)	1941.0 mm	(S)	3765.0 mm
(J)	415.0 mm	(U)	1245.0 mm

## Options

Back up alarm	Lockable fuel cap
Air conditioning	Loudspeaker & radio ready
Rotating beacon	Proportional engine fan with inverter
Carriage with hydraulic attachment lock	Protective grill for windshield
Roof window wiper	Rear Mirror
Air suspension seat	Sun visor
Boom wiring harness	Support for registration plate
Cold weather starting	Work lights on boom
Custom colour	Draw bar coupler tow hitch
Cyclonic air prefilter	Remote control system with on-board charger
Forward/Reverse control on Steering Wheel Lever (no longer on joystick)	



**Doosan Benelux S.A./N.V.**  
 Drève Richelle167  
 1410 Waterloo  
 Tel.: +32 2 371 68 11 Fax: +32 2 371 69 00



**Bobcat**®

[www.bobcat.eu](http://www.bobcat.eu)